

R3477

Ideal for mobile communication applications including base stations and handsets, from the development stage to production and installation



W-CDMA



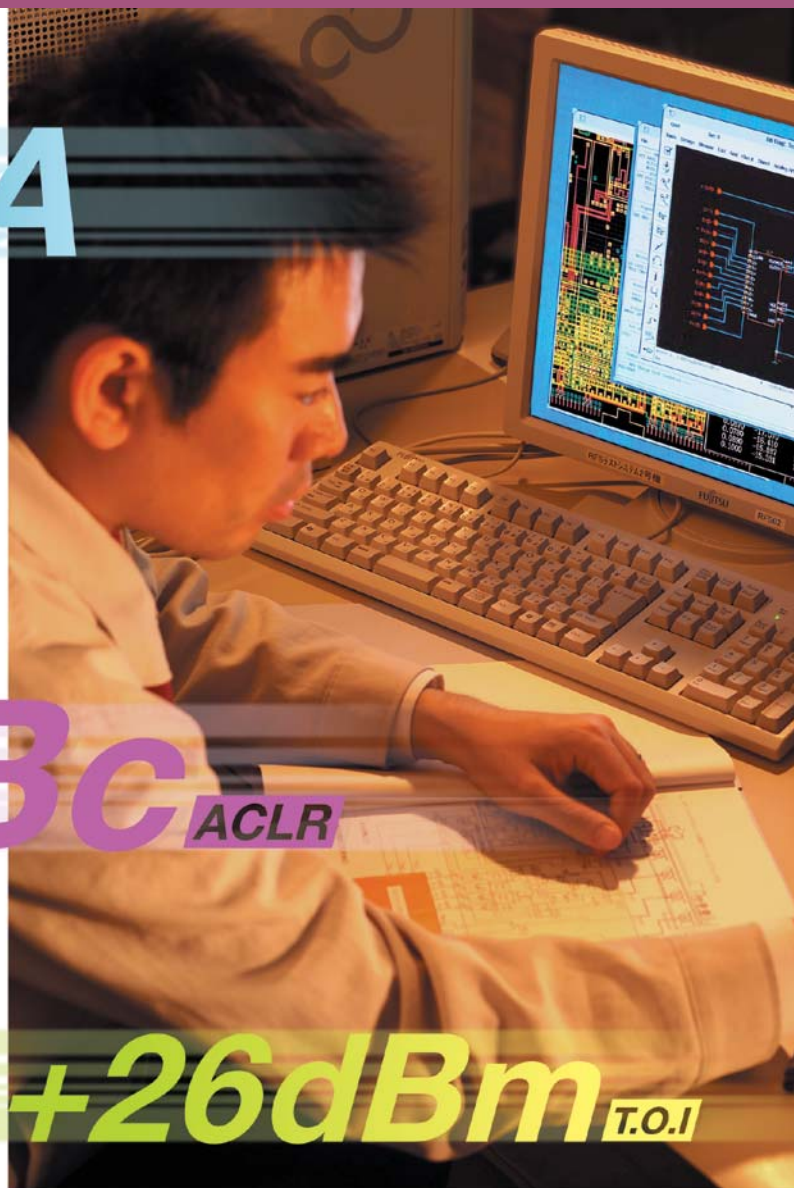
-86dBc_{ACLR}

The IMT-2000 is a third-generation mobile telephone system used to implement increased data transfer speeds, improved voice quality, and international roaming service. The IMT-2000 utilizes a broadband RF digital modulation technique for high-speed data transfer, adopts a multicarrier system to accommodate growth in the number of users, and incorporates other new technologies. In an environment for mobile phone systems, measuring instruments must have higher performance and, at the same time, the flexibility required for developing new communication systems and responding to changes in communication specifications.

The R3477 signal analyzer is a high-performance spectrum analyzer that has been developed to meet these requirements. With our proprietary RF technology, the signal analyzer achieves an average display noise level of -158 dBm^{*1} and third-order intermodulation distortion (TOI) of +26 dBm^{*2}. The wide dynamic range that they can measure is unprecedented. Their noise correction function enables measurement of a wide dynamic range of -86 dBc (representative value), especially useful in measurement of the adjacent channel leakage ratio (ACLR) of 3GPP (W-CDMA). In addition to RF measurement, the R3477 has a broadband modulation analysis function (25 MHz bandwidth) as standard. By adding signal analysis options, each of which is dedicated to a different communication system, the R3477 provides expanded functionality and can be used as a transmitter tester.

^{*1}: Representative value for RBW of 1 Hz, and a frequency of 1 GHz, when the built-in preamplifier is off

^{*2}: Representative value at a range of 2 GHz to 3.3 GHz



+26dBm_{T.O.I}

- Frequency range
9 kHz to 13.5 GHz
- High-performance spectrum analysis
- Flexibility in digital modulation analysis
3GPP (W-CDMA), 3GPP2 (cdma2000), etc.
- Increased measurement accuracy through digitalization
of a substantial number of circuits
- Different types of user interfaces provided
8.4-inch TFT display (touch panel)
Mouse, keyboard, external memory, etc.: USB
Remote control, external control: LAN and GPIB
Monitor output: VGA



cdma2000

-158dBm DANL



Diverse options

OPT.21	High stability frequency standard $\pm 5 \times 10^{-9}$ /day
OPT.22	High stability frequency standard $\pm 3 \times 10^{-10}$ /day, $\pm 2 \times 10^{-8}$ /year
OPT.23	Rubidium frequency standard $\pm 1 \times 10^{-10}$ /month
OPT.50	3GPP analysis software (supporting HSDPA)
OPT.52	cdma2000 1xEV-DV analysis software (supporting cdmaOne and cdma2000 1x)
OPT.54	cdma2000 1xEV-DO analysis software (supporting revision A)
OPT.60	WiBro analysis software
OPT.79	Tracking generator

Output amplitude range: -10 dBm to 0 dBm
Frequency range: 100 kHz to 3.3 GHz

Package options

Several package options are available for the R3477. Any of the following options can be added to the R3477 basic package.

Package No.

Configuration

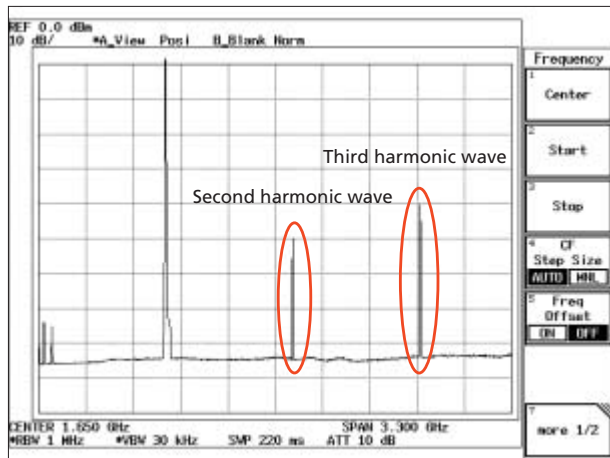
- R3477 + 50**
Suitable for RF transmission characteristics evaluation and modulation analysis testing of 3GPP (W-CDMA) systems
- R3477 + 52**
Suitable for RF transmission characteristics evaluation and modulation analysis testing of 3GPP2 (cdma2000) systems
- R3477 + 54**
Suitable for RF transmission characteristics evaluation and modulation analysis testing of EVDO (revision A) systems

World's Widest Dynamic Range

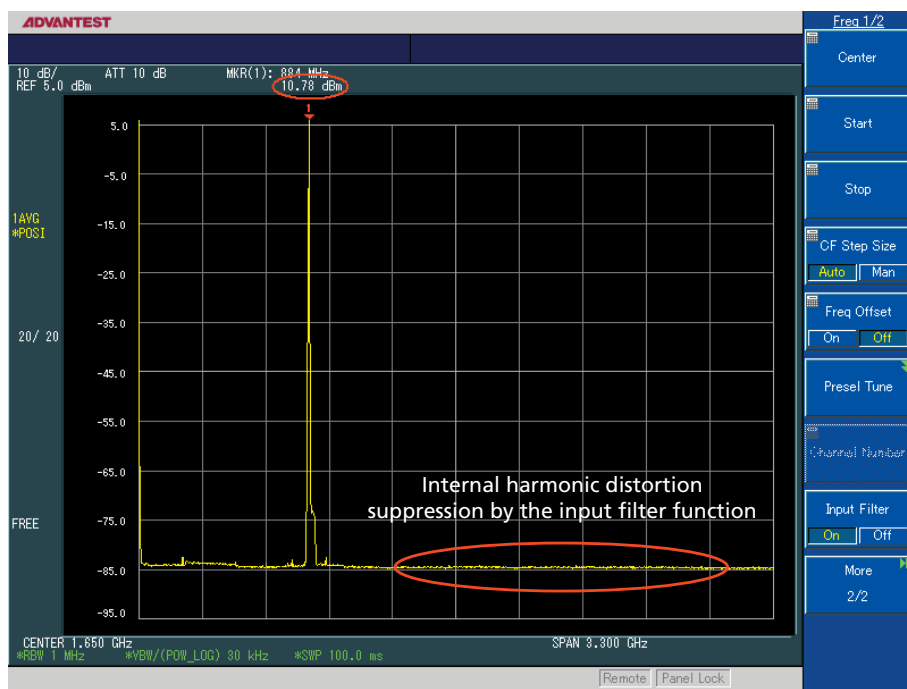
Our proprietary technologies help to realize the world's widest dynamic range of measurement*. Thus, spurious measurement conforming to category B (measurement based on the 3GPP standard) is now easily performed using only the main unit. In measurement of the 800 MHz band, harmonic distortion limited previous measuring instruments in their measured dynamic range. The harmonic distortion dynamic range of 90 dB achieved by the R3477 is due to the new input filter function developed by ADVANTEST (patent pending).

- Average display noise level:
 –156 dBm/Hz typ. (@2 GHz, preamplifier off)
 –168 dBm/Hz typ. (@1 GHz, preamplifier on)
- TOI: > +21 dBm (1 GHz to 2 GHz)

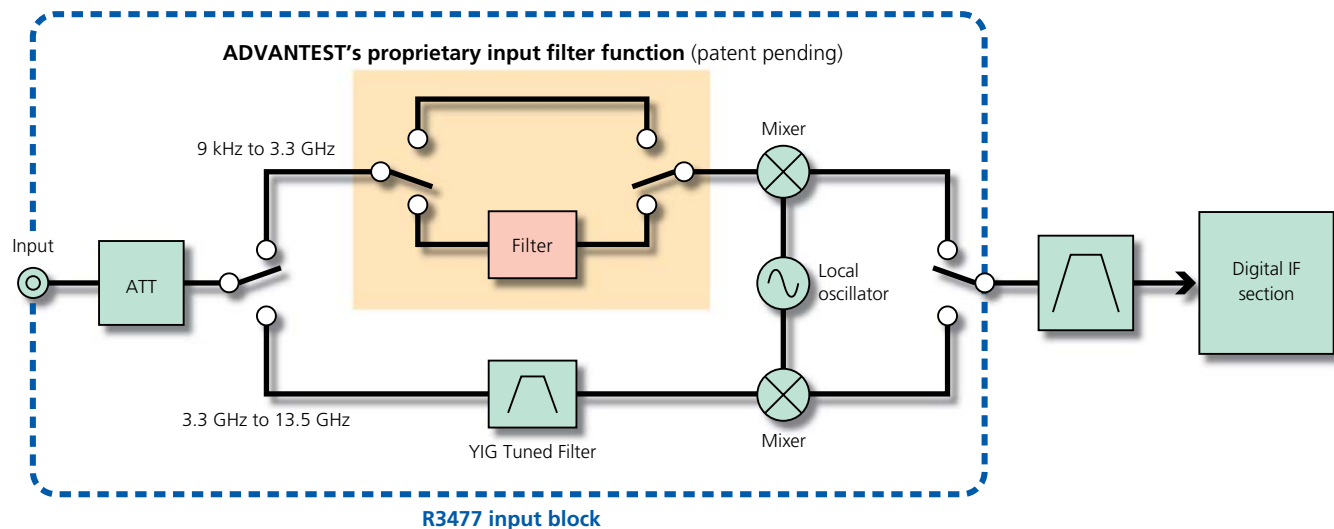
*: As of January 2005



800 MHz input
(previous instruments)



800 MHz input



Adjacent channel leakage ratio (ACLR) measurement function

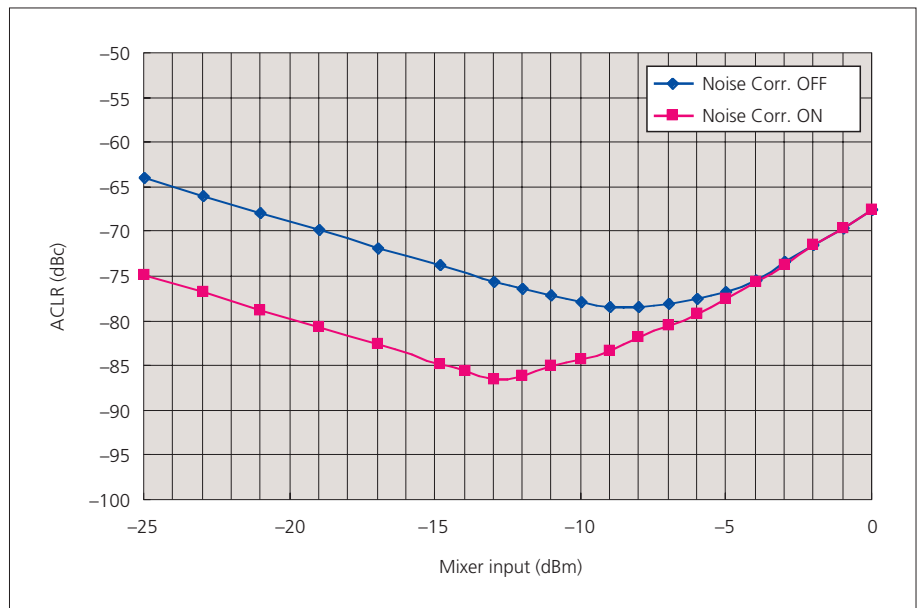
The dynamic range of ACLR measurement depends on the internal noise of the analyzer and two-signal tertiary distortion (spectrum re-growth). The R3477 has a very wide dynamic range as a result of front-end noise reduction and improvement of the tertiary intercept point (+26 dBm typ.).

The displayed measured data is used to calculate carrier wave power, and the integral of this calculated value is calculated with regard to the power of the specified adjacent channel. The ratio of the calculated integral to the carrier wave power

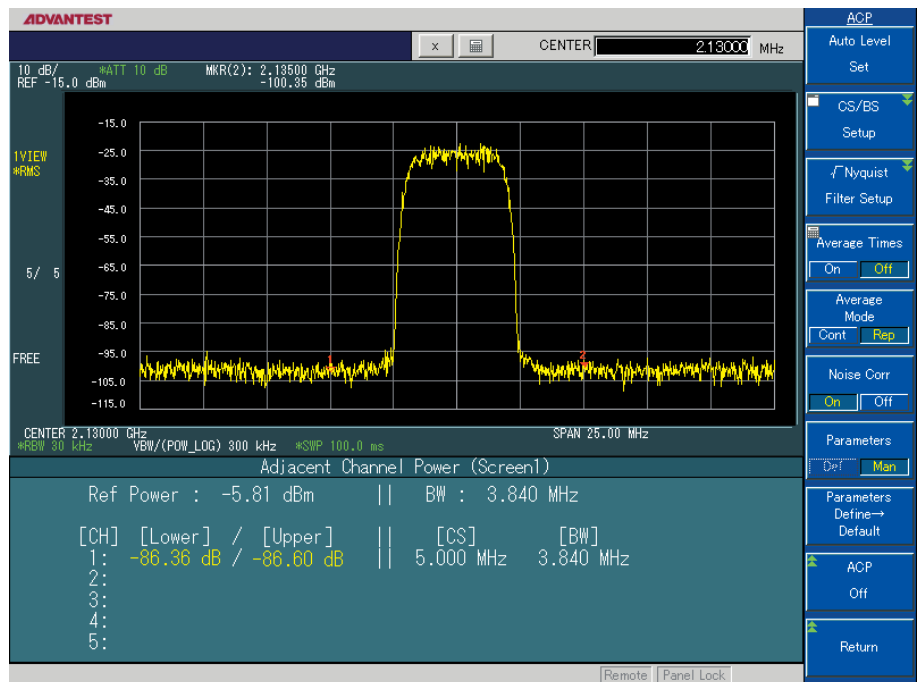
is the ACLR value, which is displayed as an ACLR measurement result.

In addition, measurement using the root Nyquist filter function can be performed, and different digital mobile communication standards, including W-CDMA and cdma2000, are supported. The R3477 is equipped with a proprietary noise correction function and can perform measurement in a wide dynamic range of -86 dBc (representative value), as shown below.

Dynamic range of ACLR measurement
at the mixer input level



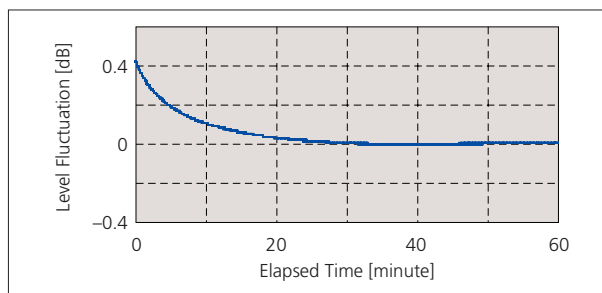
3GPP 1-carrier/ACLR measurement
(noise correction enabled)



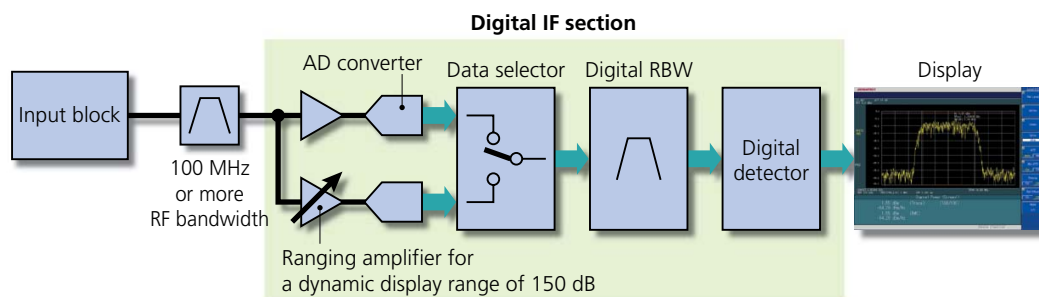
Level accuracy

The spectrum analyzers incorporate high-performance digital IF technology, making possible high-precision measurement.

- **General level accuracy:**
 $\leq \pm 0.7$ dB (50 MHz to 2.5 GHz; ATT: 10 dB; RBW: 100 kHz)
- **Uncertainty of level display linearity:** $\leq \pm 0.08$ dB
- The reference level error is 0.
- **Warm-up:** 10 minutes at 0.1 dB typ.
- The self-calibration time has been reduced to about one tenth of the conventional value.



Level stability after power-on

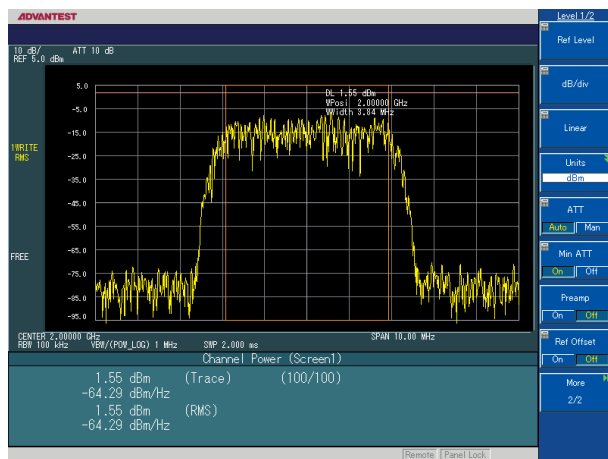


Channel power measurement

RMS power measurement functions

Power measurement functions are provided. These functions are essential for evaluation of W-CDMA (HSDPA), cdma2000, wireless LAN, and other broadband communication systems. The functions are also essential for evaluation of burst signals of GSM, PHS, and other systems that have large amplitude fluctuations.

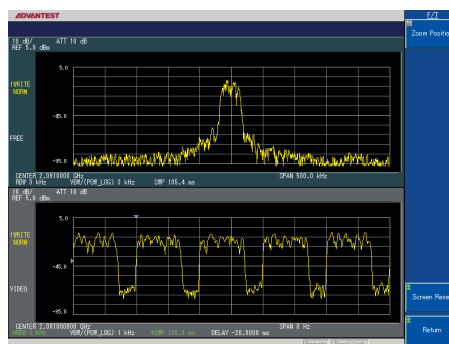
- **Channel power measurement:** RMS measurement of the total power within the band specified in the Measuring window
- **Average power measurement:** Measurement of the average power of the measured screen



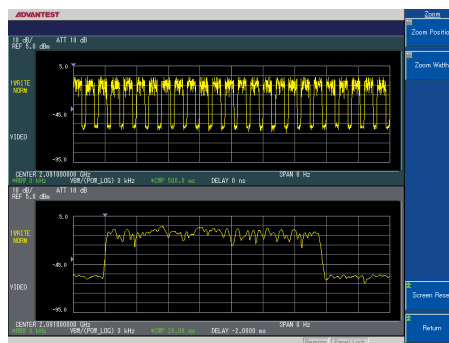
Channel power measurement

T-T, F-F, and F-T measurement

The zoom function uses two windows (windows A and B) to display values. The function can be used for versatile signal analysis, in F-F mode, F-T mode, or T-T mode. F-F mode displays results by different frequency spectra or by different spans, F-T mode displays a zero-span while monitoring spectra (fixed reception function), and T-T mode is useful for partial zoom by time domain.



F-T mode display



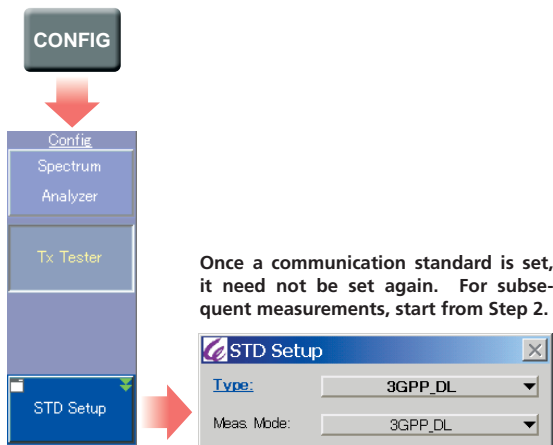
T-T mode display

Simple operations for measurements based on digital mobile communication standards

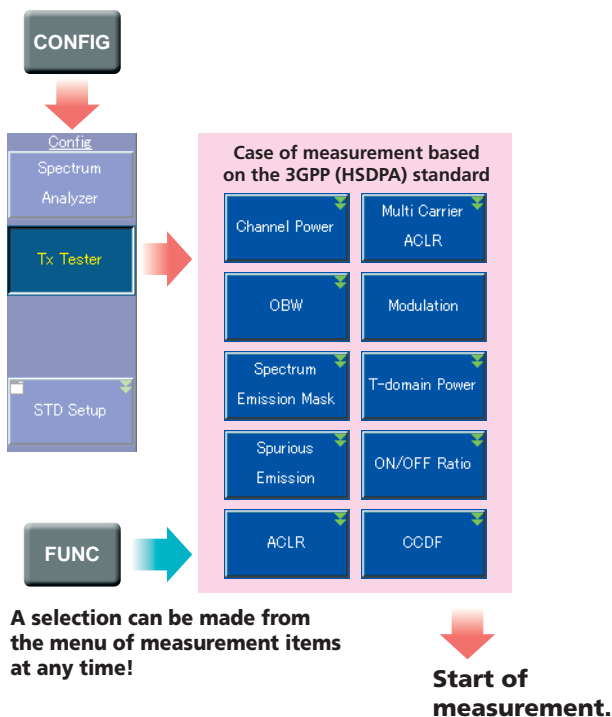
The work of installing a base station of a W-CDMA (HSDPA), cdma2000, or other such system requires various measurement steps. For increased work efficiency, the R3477 is newly equipped with the direct keys (CONFIG key and FUNCTION key) so that even a first-time user can easily perform the intended measurement.

The CONFIG key offers three menu items: Tx Tester, Spectrum Analyzer, and STD Setup. The Tx Tester menu enables selection of any of the measurement items, which are the modulation analysis function, ACP measurement, OBW measurement, and spurious measurement, all of which conform to each of the supported mobile communication standards.

1 First, select a communication standard.

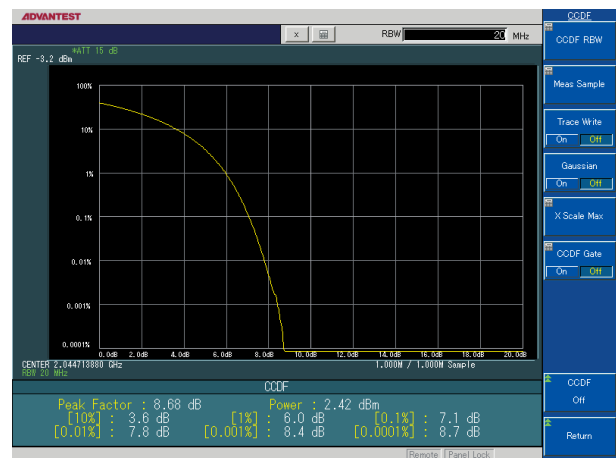


2 Then, all you need to do is start measurement in Tx Tester mode!



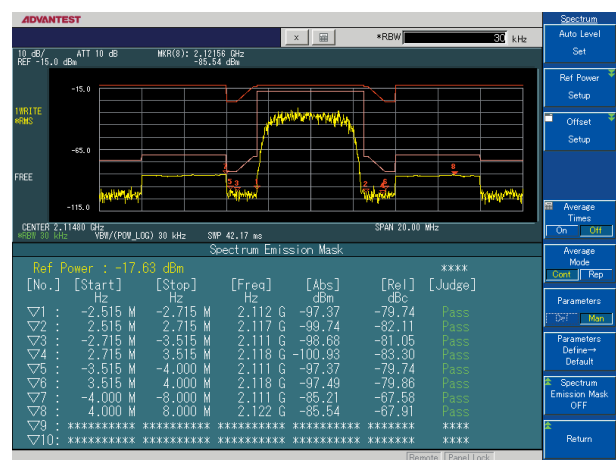
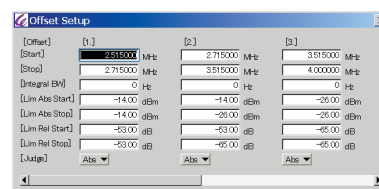
CCDF measurement function and power display function provided as standard

In CCDF measurement, the CCDF curve of the reference Gaussian noise can be displayed, and the difference between this curve and the Gaussian distribution and peak factors can easily be measured. A CCDF RBW up to 20 MHz can also be measured. Results are acquired by hardware for measurements up to a bandwidth of 10 MHz, which is much faster than calculations performed by software.



Spectrum emission mask measurement function

The spectrum emission mask measurement function is provided as standard. Pass/Fail measurement based on 3GPP (HSDPA), cdma2000, and other standards can easily be performed with this function.



3GPP (HSDPA) analysis software option (OPT. 50)

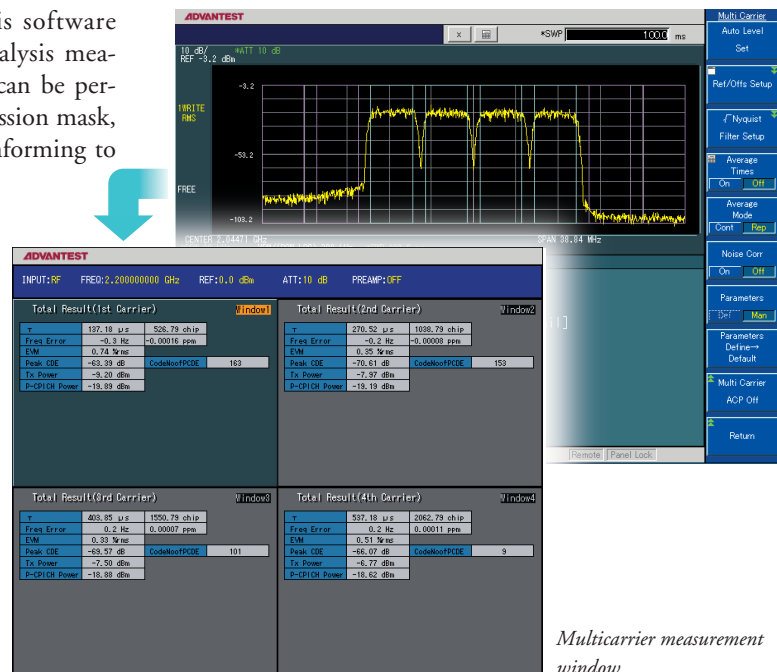
With the 3GPP (HSDPA) modulation analysis software option (OPT.50) installed, modulated signal analysis measurement based on the 3GPP standard release 5 can be performed. In addition, ACLR, OBW, spectrum emission mask, spurious IPDL, and other such measurements conforming to the standard can easily be performed.

Multicarrier measurement

In multicarrier measurement mode, the modulation accuracy of each of four carriers is measured simultaneously. This simultaneous measurement allows a user to check the interference between these carriers.

Total result (numeric)

- τ (μ sec, chip)
- Carrier frequency error (Hz, ppm)
- EVM (%rms)
- Peak CDE (dB)
- Code number of PCDE
- Tx power (dBm)
- P-CPICH (dBm)



Multicarrier measurement window

cdma2000 (1xEV-DV) analysis software option (OPT. 52)

With the cdma2000 (1xEV-DV) analysis software option (OPT.52) installed, signal analysis measurement based on Revision D to the cdma2000 standard, the cdmaOne standard, or the cdma2000 1x standard can be performed. Quantitative results, such as ρ , EVM, and frequency errors can be displayed concurrently with graphical displays such as code domain analysis. In addition, OBW, spectrum emission mask, spurious, and other such measurements conforming to the standard can easily be performed.

Analysis of a channel whose modulation method has changed

The cdma2000 DV channel uses different modulation methods depending on the data rate. When a diffusion code is specified and a power-and-time graph is displayed, changes to power and modulation methods can be measured.

Code power vs. PCG

- PCG
- Mod
- Power (dBm, W)



Specified code measurement window

cdma2000 (1xEV-DO) analysis software option (OPT.54)

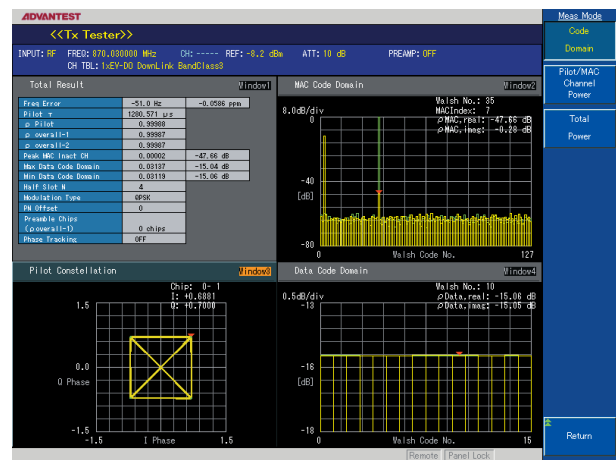
With the OPT.54 installed, signal analysis measurement based on 1xEV-DO standard Revision 0 and Revision A can be performed for DownLink and UpLink modulated signals of base stations and mobile stations. In addition, OBW, spectrum emission mask, spurious, CCDF, T-Domain Power, ON/OFF Ratio, and other such measurements conforming to the standard can easily be performed.

Automatic determination of the channels of a measured signal

In BTS code domain mode, automatic determination of whether a measured signal includes only the Pilot channel or both the Pilot and Data channels can be performed for analysis, and the electric power of the Pilot and MAC channels of an actual operating signal can be measured.

Total result (numeric)

- Freq Error [Hz, ppm]
- τ [μ s]
- ρ pilot
- ρ overall-1
- ρ overall-2
- Max Data Code Domain [dB]
- Preamble Chips [chips]
- Min Data Code Domain [dB]
- Modulation Type
- PN Offset
- Peak MAC Inact CH [dB]
- Phase Tracking



Subtype2 code domain measurement downlink

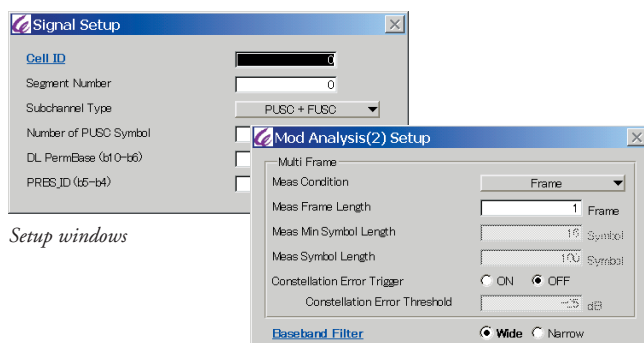
WiBro analysis software option (OPT.60)

With the OPT.60 installed, the TX Tester function (DownLink only) used for base station signal measurement based on the WiBro standard can be added.

- With the modulation analysis function, measurement of constellation errors, center frequency errors, electric power, and other such items can be performed.
- With the ramp measurement function, a burst waveform is captured, synchronization is achieved using the preamplifier, and a waveform is displayed through a template.
- Through simple key operation, a spectrum mask defined in the standard can be measured.

Measurement items

- Modulation Analysis (Total Result, Constellation ...)
- Channel Power
- OBW
- ACP
- Spectrum Mask
- Spurious Emissions



Setup windows



Modulation analysis measurement window

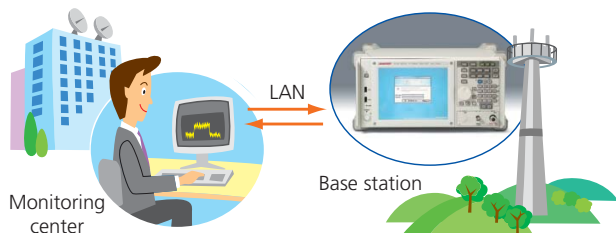


Power time and ramp measurement window

Maintenance of mobile communication base stations by remote operation

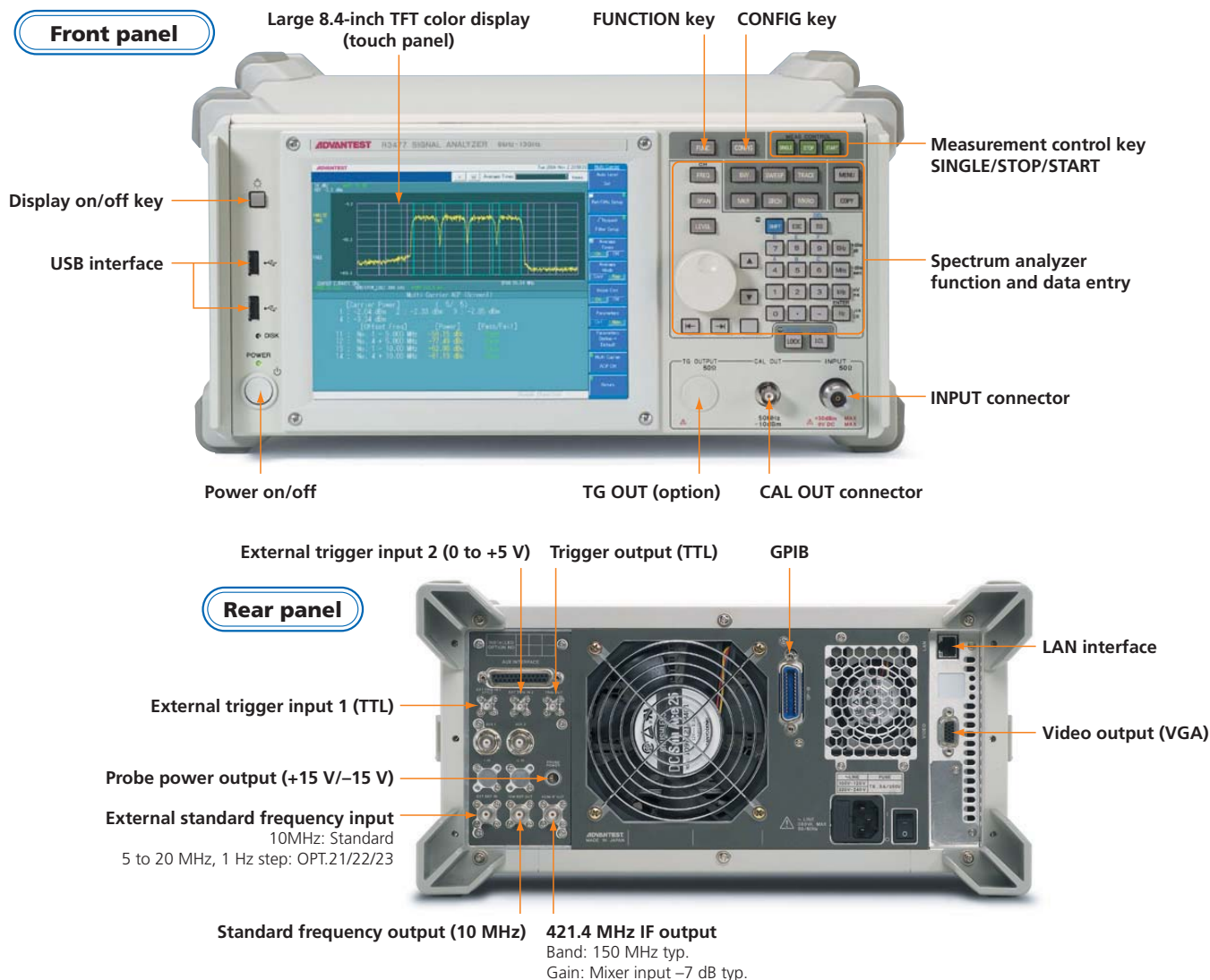
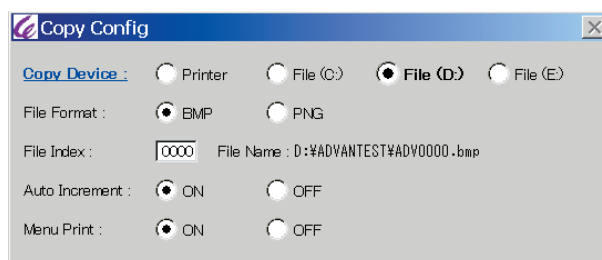
Remote operation of the R3477 can be performed from an external PC on which Windows® XP is installed.*1 Such remote operation is performed via the R3477 LAN interface. The R3477 can be installed at mobile communication base stations without operators, and different settings can be made while measurement results of the sites are being monitored by an administration station. The R3477 is best suited for users who want to comprehend the signal conditions at the sites and to monitor output signals.

*1: In anticipation of possible power failures, consider using an uninterruptible power supply with the R3477.



Large-capacity USB memory

The R3477 is equipped with two USB interface systems (USB 1.1 is used). When a copy device is specified with a soft key, a screenshot can easily be saved as a PNG or bmp file in USB memory. Since the size of such data stored as a PNG file is about 10 KB, more than 5,000 screenshots of data or measurement conditions can be stored in a 64 MB USB memory device. In a PC environment, data can be accumulated, and measured data can easily be edited for reports.



Specifications

Frequency

Frequency Range (spectrum analysis mode)

Preamplifier off:	9 kHz to 13.5 GHz
Preamplifier on:	100 kHz to 3.3 GHz

Resolution bandwidth:	1 Hz to 10 MHz (sequences 1, and 3)
-----------------------	-------------------------------------

Sweep

Sweep time

Zero span:	1 μ s to 6000 s
Span > 0 Hz:	2 ms to 2000 s

Trigger source:	Free-run, Video, IF, Line, Ext 1 (TTL level), and Ext 2 (0 to +5 V)
-----------------	---

Amplitude

Amplitude measurement range

Preamplifier off:	+30 dBm to average display noise level
Preamplifier on:	+30 dBm to average display noise level

Maximum safety input level (input ATT.: ≥ 10 dB)

Average continuous power

Preamplifier off:	+30 dBm
Preamplifier on:	+13 dBm

Input ATT. range:	0 to 75 dB by 5 dB steps
-------------------	--------------------------

Detector modes:	Normal, positive peak, negative peak, sample, and average (RMS, video, and voltage)
-----------------	---

Amplitude accuracy

Frequency response

(input ATT.: 10 dB, and temperature range: 20 to 30°C)

Preamplifier off

50 MHz to 2.5 GHz:	± 0.4 dB
9 kHz to 3.3 GHz:	± 1.0 dB
3.3 GHz to 7.5 GHz:	± 1.5 dB
7.5 GHz to 13.5 GHz:	± 2.0 dB

Dynamic range

Average display noise level

(input ATT.: 0 dB, and temperature range: 20 to 30°C)

Preamplifier off

10 MHz to 1 GHz:	< -156 dBm (typical: -158 dBm)
1 GHz to 2 GHz:	< -154 dBm (typical: -156 dBm)

Preamplifier on

10 MHz to 1 GHz:	< -162 dBm (typical: -168 dBm)
1 GHz to 2.5 GHz:	< -160 dBm (typical: -166 dBm)

1 dB gain compression (preamplifier off)

200 MHz to 3.3 GHz:	$> +6$ dBm (typical: $+9$ dBm)
---------------------	--------------------------------

2nd order harmonic distortion (preamplifier off)

50 MHz to 1.65 GHz:	< -60 dBc (mixer level: -20 dBm)
720 MHz to 958 MHz:	< -100 dBc (mixer level: -10 dBm, input filter: ON)
> 1.65 GHz:	< -100 dBc (mixer level: -10 dBm)

3rd order intercept point (TOI) (preamplifier off)

1 GHz to 2 GHz:	$> +21$ dBm (typical: $+25$ dBm)
2 GHz to 3.3 GHz:	$> +22$ dBm (typical: $+26$ dBm)

General specifications

Operating environment range:	Ambient temperature: 0 to +50°C Relative humidity: 80% or less (No condensation)
------------------------------	--

Storage environment range:	Ambient temperature: -20 to +60°C Relative humidity: 80% or less (No condensation)
----------------------------	--

AC power input:	100 to 120 VAC, 50 Hz/60 Hz 220 to 240 VAC, 50 Hz/60 Hz (automatic switching between 100 VAC and 220 VAC)
-----------------	---

Power consumption:	360 VA or less Approx. 250 VA (excluding options)
--------------------	--

Dimensions:	Approx. 365 (W) x 177 (H) x 417 (D) mm (excluding protrusions, such as handles and feet)
-------------	---

Mass:	18 kg or less (excluding options)
-------	-----------------------------------

Ordering information

Main unit Signal analyzer:	R3477
-------------------------------	-------

Accessories	
Power cable:	A01412
Input cable (50 Ω):	A01037-0300
N-BNC adapter:	JUG-201A/U

Option

High stability frequency standard $\pm 5 \times 10^{-9}$ /day: OPT.21

High stability frequency standard

$\pm 3 \times 10^{-10}$ /day, $\pm 2 \times 10^{-8}$ /year: OPT.22

Rubidium frequency standard $\pm 1 \times 10^{-10}$ /month: OPT.23

3GPP analysis software (supporting HSDPA): OPT.50

cdma2000 1xEV-DV analysis software

(supporting cdmaOne and cdma2000 1x): OPT.52

cdma2000 1xEV-DO analysis software

(supporting revision A): OPT.54

WiBro analysis software: OPT.60

Tracking generator: OPT.79

Accessories (optional)

Rack-mount set:	A122001 JIS standard A124001 EIA standard R160005
Transit case:	

Microsoft and Windows are registered trademarks of Microsoft Corporation in the United States and other countries.

Please be sure to read the product manual thoroughly before using the products.
Specifications may change without notification.



<http://www.advantest.co.jp>

ADVANTEST CORPORATION
Shin-Marunouchi Center Building,
1-6-2 Marunouchi, Chiyoda-ku,
Tokyo 100-0005, Japan
Phone: +81-3-3214-7500

Korea:
Advantest Korea Co., Ltd.
22BF, Kyobo KangNam Tower,
1303-22, Seocho-Dong, Seocho-Ku,
Seoul #137-070, Korea
Phone: +82-2-532-7071
Fax: +82-2-532-7132

China:
Advantest (Suzhou) Co., Ltd.
Shanghai Branch Office:
Bldg. 6D, NO.1188 Gumei Road,
Shanghai, China 201102 P.R.C.
Phone: +86-21-6485-2725
Fax: +86-21-6485-2726

Shanghai Branch Office:
406/F, Ying Building, Quantum
Plaza, No. 23 Zhi Chun Road,
Hai Dian District, Beijing,
China 100083
Phone: +86-10-8235-3377
Fax: +86-10-8235-6717

Taiwan:
Advantest Taiwan, Inc.
No.1 Alley 17, Lane 62, Chung-Ho
Street, Chu-Pei, Hsin-Chu Hsien,
Taiwan R.O.C. 302
Phone: +886-3-5532111
Fax: +886-3-5541168

**Singapore, Malaysia, Thailand, Indonesia,
Philippines, Vietnam:**
Advantest (Singapore) Pte. Ltd.
438A Alexandra Road, #08-03/06
Alexandra Technopark Singapore
119967
Phone: +65-6274-3100
Fax: +65-6274-4055

North America, Canada, Mexico:
Advantest America, Inc.
3201 Scott Boulevard, Suite,
Santa Clara, CA 95054, U.S.A
Phone: +1-408-988-7700
Fax: +1-408-987-0691
[http://www.advantest.com/
instruments](http://www.advantest.com/instruments)

Europe:
ROHDE & SCHWARZ Europe GmbH
Mühldorfstraße 15
D-81671 München, Germany
(P.O.B. 80 14 60
D-81614 München, Germany)
Phone: +49-89-4129-13711
Fax: +49-89-4129-13723